



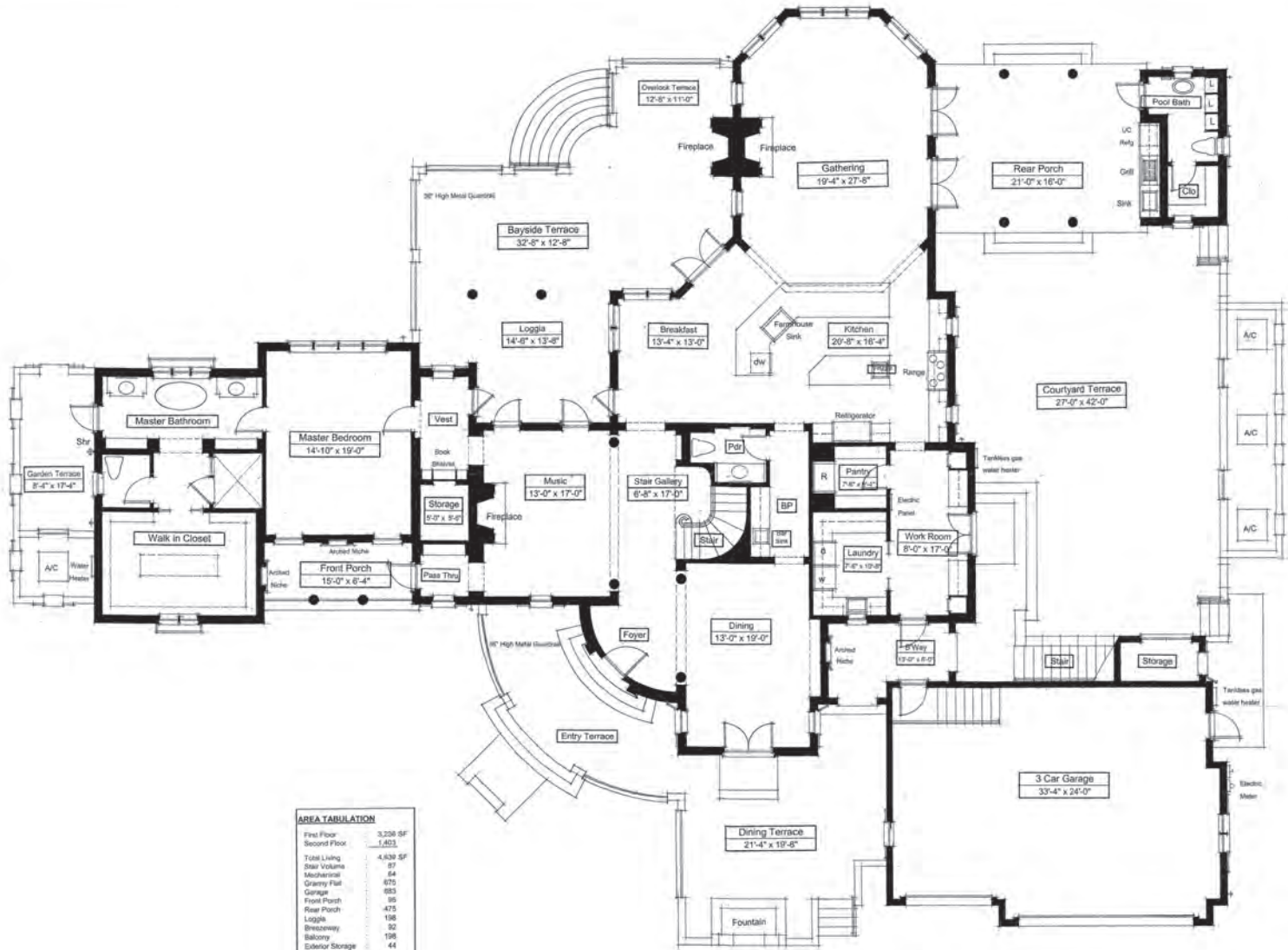
SEAGULL LANE VIEW

SARASOTA, FLORIDA



SARASOTA BAY VIEW

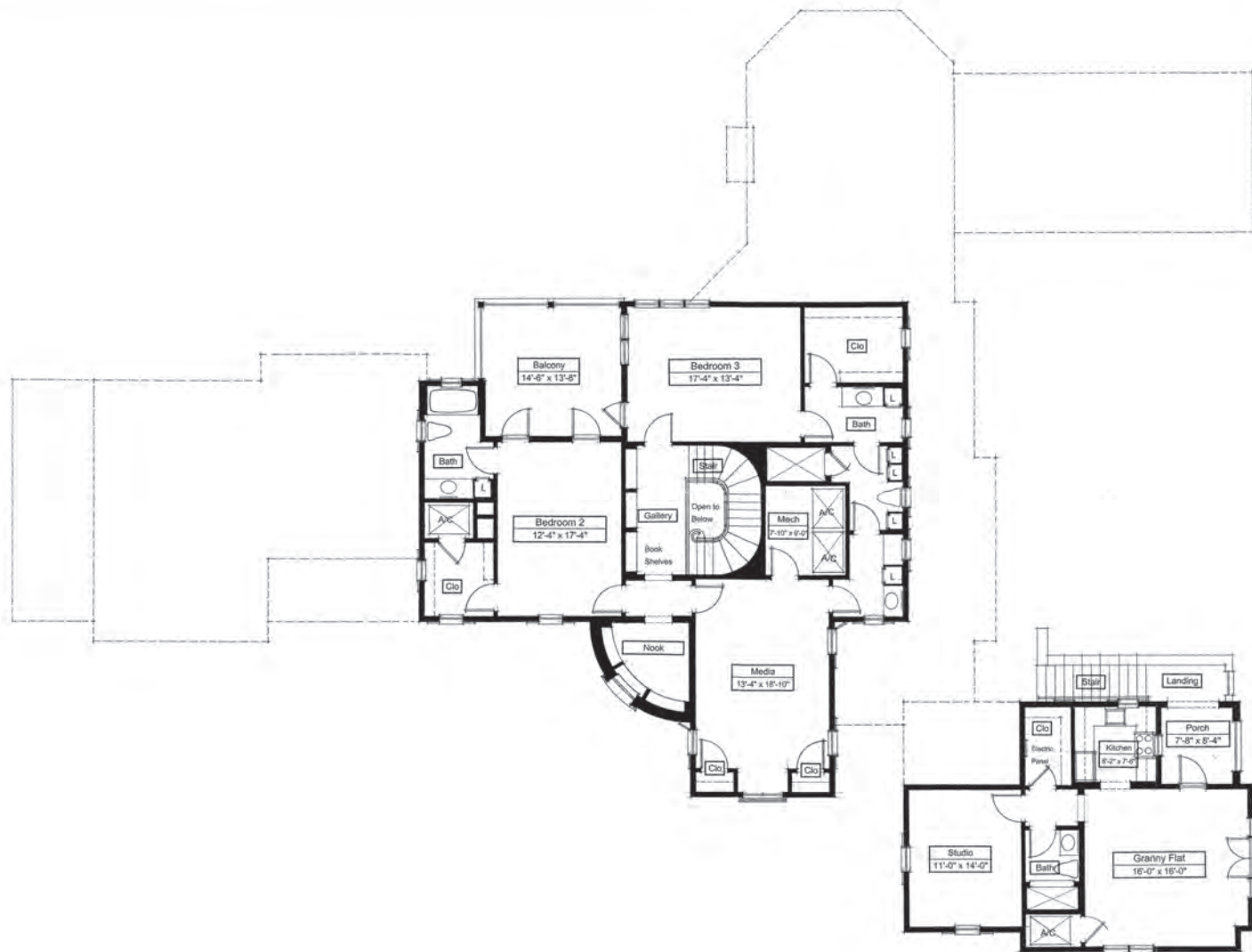
SARASOTA, FLORIDA



AREA TABULATION

| | |
|---------------------|-----------------|
| First Floor | 3,258 SF |
| Second Floor | 1,401 |
| Total Living | 4,639 SF |
| Stair Volume | 87 |
| Mechanical | 64 |
| Granny Flat | 675 |
| Garage | 883 |
| Front Porch | 98 |
| Rear Porch | 475 |
| Loggia | 198 |
| Breacaway | 92 |
| Balcony | 198 |
| Exterior Storage | 44 |
| Exterior Stair | 91 |
| Granny Porch | 72 |
| Entry Terrace | 350 |
| Dining Terrace | 416 |
| Bayside Terrace | 598 |
| Garden Terrace | 144 |
| Total | 9,141 SF |

FIRST FLOOR PLAN
1/4"=1'-0"



SECOND FLOOR PLAN
1/8" = 1'-0"